

订货须知:

- 1、按照使用条件决定泵的规格、材料、冷却和密封管路系统及原动机。在订货时应提供流量、扬程、吸入压力、密度、温度及介质等。并指出介质的易燃性、易爆性、毒性、腐蚀性、结晶性及是否允许封液渗入介质内。
- 2、若对原动机有特殊要求时，应说明应用现场条件，环境温度湿度、安装地点及类别（防爆、防火等要求）电压大小等。
- 3、若用户需要选用轴封，在订货时由制造厂按使用条件决定供货的型号及材料、规格，也可按用户要求供货。
- 4、以上要求均填写在（数据单）上。

Ordering instructions

1. Pump size, material, cooling and sealing piping system and motor should be decided according to service conditions. When ordering, the following condition should be given; capacity, head, suction pressure, specific gravity, temperature and medium etc and the medium characteristics should be specified. Such as inflammable, explosive, toxic, corrosiveness, crystalline and whether sealing liquid is allowed to enter into pump medium.
2. If special motor is required, the customer should specify site conditions, ambient temperature and moisture, installation place and type (anti-explosive and anti-fire etc), voltage.
3. If the customer selects shaft sleeve, the type, size and material of shaft sleeve will be decided by manufacturer according to applied condition or according to customer's requirements.
4. The above requirements should be written on data sheet.



XBD立式单级消防泵

XBD VERTICAL SINGLE-STAGE FIRE PUMP

中荷 上海海德隆流体设备制造有限公司
SHANGHAI HAIDELONG FLUID EQUIPMENT MFG. CO., LTD



- 1、安装使用前请详细阅读产品使用说明书!!
 - 2、泵用电机应由专业人员进行有效安全接地，永久性接地标志为：Ⓧ
 - 3、为防止触电，维修或清理电泵前必须先切断电源!!!
1. Do read Operation Manual carefully before installation and operation!!
 2. The motor of pump must be safely earthed, which should be done by a professional. Permanent earthing sign: Ⓧ
 3. To avoid electric shock, cut off power supply before repairing or cleaning pump!!!

中荷 上海海德隆流体设备制造有限公司
SHANGHAI HAIDELONG FLUID EQUIPMENT MFG. CO., LTD

地址: 上海奉贤南桥镇普天路8号
电话: (0086)-021-57432276
传真: (0086)-021-57432272
技术服务热线: (0086)-800-57432227
网址: //www.HAIDELONG.com
电子信箱: SALE@HAIDELONG.com
邮编: 201400

Add: 8 Putian Road, Nanqiao Town, Fengxian Region, Shanghai
TEL: (0086)-021-57432276
FAX: (0086)-021-57432272
Technical service hot line: (0086)-800-57432227
Http: //www.HAIDELONG.com
E-mail: SALE@HAIDELONG.com
P. O: 201400

• 技术不断进步、保留不预先通知进行技术修改的权利。TECHNOLOGY PROGRESSES CONSTANTLY, PRESERVE THE RIGHT TO CHANGE THE CONTENT WITHOUT PRIOR NOTICE. •



使用说明书 Usage Manual

ISO9001:2000国际质量管理体系认证企业
国家消防产品认可单位

企业简介 BRIEF INTRODUCTION OF ENTERPRISE

是一家专业制造通用流体设备的中外合资企业，坐落于东方国际大都市——上海。公司于2003年与荷兰外商合资，同时引进欧洲具有国际水平的生产技术和企业管理模式，并长期聘请国外专家为公司进行技术指导。公司资金雄厚，生产设备先进，配置了一套计算机全程控制的水泵测试系统。并拥有一批高素质的专业人员，同时引进ISO9001:2000国际质量管理体系管理经验，并通过认证获得证书。

XBD系列消防泵是根据国内外市场对消防泵的特殊需求，严格按照国家最新颁布的GB6245-2006《消防泵》标准而研制开发的新型节能环保产品，经国家消防装备质量监督检测中心检测，各项性能指标全部达到要求，并获得国家消防产品认可证书，该产品达到了国内同类产品领先水平。

在“一切为了客户”的方针指导下，不断开拓进取、创新发展，在长期的实践中形成了一套完整的质量管理体系，并配备了一支技术过硬的安装调试、售后服务队伍。销售网点辐射全国各大城市，产品行销全国各省、市、自治区，并出口欧洲、东南亚等国。公司以一流的管理、一流的产品、一流的服务赢得了国内外广大用户的信赖和好评。

宗旨：科技创新，以人为本。

Shanghai Haideo-equipment making co.,ltd is a joint-venture company specializing in manufacturing hydro-equipments for general purpose, which lies in the international metropolis of Shanghai. In 2003, the company joined venture with a Netherlandish company, at the same time, produce technologies and enterprise manage model, reaching the international level, were introduced from the Europe. The company has been employing foreign experts to indicate the technology for a long time. It has abundant capital, developed producing equipments, and has been matched with a set of pump test system fully controlled by computers, and owns many high character specialists, moreover, it has introduced the international quality system managing experiences of ISO 9001:2000, and awarded with the certificate.

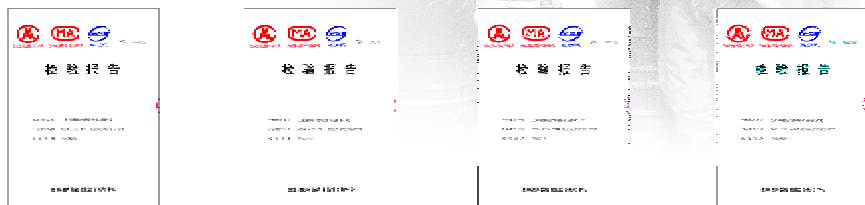
XBD series fire-fighting pumps are a kind of new type energy-saving and green products researched and developed in full compliance with the state-issued-newly standard of GB6245-2006《Fire pumps》, researched and developed according to the end-user's practical needs and special using requirements. The inspection of the state fire-fighting equipment quality supervising center shows all kinds of performance indexes are up to or over the standard's requirements and it earned the certificate for fire-fighting products awarded by Shanghai city. Its quality has reached the leading level comparing with the standard products presently. Guided by the policy of "everything is for clients", Haideo company is determined to explore and develop new technologies, as formed a set of complete quality management system and reached a new level after service from our people everywhere.

The sales net covers all metropolises around the country, the production sold to all provinces, municipalities and provinces all over the country, and exported to the east Asia, Europe, the Americas, Africa, Oceania, and many clients' trust and praise, depending on a top-quality management, advanced production technology and service.

Haideo company's tenet: science and technology, innovation, and humanism.

国家消防装备质量监督检验中心检验报告

Survey report of inspection center of quality supervision of the national fire-fighting equipment



《系列消防泵》 XBD
XBD SERIES FIRE PUMP

产品概述 Product Introduction

XBD系列消防泵是我公司根据市场对消防泵的实际需要及其特殊的使用要求，严格按照国家最新颁布的GB6245-2006《消防泵》标准而研制开发的新型消防产品。经国家消防装备质量监督检测中心检测，各项性能指标均达到或超过标准的要求，并获得国家消防产品认证证书。

XBD系列分为立式单级、立式多级、便拆立式多级和卧式多级四种结构形式，以满足用户不同的使用需要。XBD series fire-fighting pumps are a kind of new type fire-fighting products researched and developed in full compliance with the state-issued-newly standard of GB6245-2006《Fire pumps》 according to the end-user's practical needs and special using requirements. The inspection of the state fire-fighting equipment quality supervising center shows its all kinds of performance indexes are up to or over the standard's requirements and it earned the certificate for fire-fighting products awarded by Shanghai city.

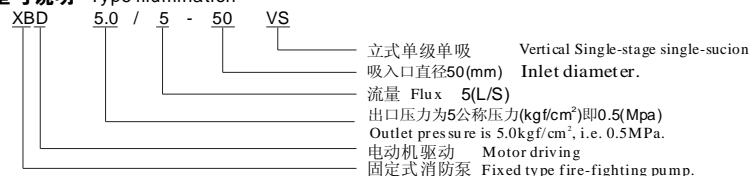
XBD series of products can be divided into four kinds of different structures, including vertical single-grade, vertical multi-grade, vertical multi-grade with convenient dismantlement and horizontal multi-grade, in order to gratify the different using requirements of clients.

产品用途 Use of the products

XBD系列消防泵主要用于各企事业单位、工程建设、高层大厦等固定消防系统中的消防栓灭火系统、自动喷淋灭火系统等，可供输送100℃以下不含固体颗粒的清水及物理化学性质类似于水的介质，又可用于消防、生活、生产共用给水系统及建筑、市政给排水等。

XBD series fire-fighting pumps are mainly used for the fixed fire hydrant fire-fighting system, automatic spraying fire-fighting system used by all sorts of organs, projects, high-floor buildings etc. and can be transferred with the clear water without solid grain under 100℃ or its equivalence, also be used for public-use d water-providing system for fire-fighting, living, production, construction and municipality.

型号说明 Type illumination



安装说明 Installation Stipulation.

- 1、安装时管路重量不得承受在泵体上，否则易损坏泵；
- 2、泵与电机是整体结构，出厂时已由厂家校正，所以安装时无须调整，因此安装十分方便；
- 3、安装时务必拧紧地脚螺栓，且每隔隔一定时段应对泵进行检查防止其松动，以免泵启动时发生剧烈振动而影响泵的性能；
- 4、为了维护方便和使用安全，在泵的出口管路上安装一只调节阀及在出口附近安装一只压力表，对于高扬程的泵，还应在出口闸阀前安装一只止回阀以防止突然断电等失去动力事故，从而确保水泵在最佳工况下运行；
- 5、泵用于有吸程的场合，应装有底阀，并且进口管道不应有过多的弯道，同时不得有漏气、漏水等现象，以免影响水泵的吸入能力；
- 6、为了不便杂质进入泵内而堵塞流道影响性能，应在泵进口前安装过滤器；
- 7、定定期（一般为15天）试运行泵，运行时间为1小时左右，以防止紧急时刻抱轴卡死不能运行。

1. Being installed, pumps should not bear the weight of the pipe system, or it is very easy to be damaged.
2. The pump is integrated with the motor, and is adjusted well by the manufacture before dispatch, so it's very convenient to be installed without any adjustment.
3. Doing its best to fasten the studs connecting with earth, when the end-user install the pump, and inspect them at an expected time in order to prevent them from becoming flexible and avoid fiercely vibration to affect the pump's performances.
4. To a convenient maintenance and safe use, there be installed with a adjusting valve and pressure gauge at the outlet pipe and close to the outlet, for the highly-lifting pump, there should be installed with a check valve at front of the outlet gate valve in order to prevent the water hammer phenomenon yielded for sudden no power and to insure the pump runs in the best conditions.
5. In the situation that the pump used in sucking, and a floor valve should be installed at the inlet, and there should be no too many curving channels, at the same time, there should be no phenomena of air-leaking, water-leaking etc.
6. In order to let impurities not get into the pump and block the flowing channel and affect the performances, a strainer should be installed at front of the pump inlet.
7. Commissioning the pump at a firm period (usually in 15 days), running time is 1 hr. about to avoid the shaft is jammed in the urgent time.

使用说明 using instruction

- 启动前：1、用手转动联轴器，转子部件应无卡死现象。
2、打开进口阀门，排气阀使水充满泵腔，然后关闭排气阀；
3、点动电机，确定转向是否正确；
- 运行：1、全开进口阀门，关闭出口管路阀门。
2、接通电源，当泵转速达到正常后，再打开出口管道阀门，并调节到所需的工况点；
3、观察泵运行后的有无异常情况，如有异常情况应立即停车检查，处理后再运行；
- 停车：1、逐渐关闭出口阀门后，切断电源；
2、关闭进口阀门；
3、如环境温度低于0℃，应采取保暖措施。
- Before start: 1、turning the clutch by hand, there should be no jammed phenomenon at the turner position.
2、Opening the inlet valve and the vent valve, letting the water fill into the pump's chamber, then closing the vent valve.
3、Clicking the switch of motor, and confirming whether the turning is right or not.
- Running: 1、Fully opening the inlet valves, and closing the valves of the outlet pipe.
2、Connecting the power, Opening the valves of the outlet pipe and adjusting the needed working point when the turning velocity is normal.
3、Watching whether there exist abnormalities or not, if yes, should the pump be stopped and inspected before re-running.
- Stop: 1、After turning off the outlet valves one by one, shutting off the power.
2、Shutting off the inlet valves.
3、If the ambient temperature is below 0℃, some warm-keeping measures should be adopted.

各种型号规格消防泵的性能曲线图见本公司的出厂检验报告。

The fire-fighting pump's performance graph for all kinds of types and specifications are shown on our inspection reports.

■ XBD**/**-**-**VS 型消防泵技术参数及外形尺寸

The installation dimensions of XBD**/**-**-**VS type fire-fighting pump.

型号 Types	流量(Q)Flux		出口压力 Pd(MPa) Outlet pressure			转速 n(r/min) rotate speed	电机 功率 P(KW) Power	效率 η(%) Power	气蚀 余量 (m) margin for erosion	重量 (kg) total weight	外形尺寸 outline dimensions			安装尺寸 Install the size		
	L/s	m ³ /h	小流量点 small flow click	设计点 Design and click	大流量点 Big flow click						H	L	C ₁ × B ₁	n-φd	C ₂ × B ₂	A
XBD3.0/5-50VS	3.5	12.6	0.34	0.30	0.23	4	63	2.5	72	560	360	120×170	4-φ14	80×130	100	
XBD3.2/5-50VS	5.0	18.0	0.37	0.32	0.25											
XBD3.4/5-50VS	6.5	23.4	0.38	0.34	0.26											
XBD3.8/5-50VS	3.5	12.6	0.42	0.38	0.31	7.5	58	2.5	108	640	440	140×200	4-φ18	100×160	105	
XBD4.0/5-50VS	5.0	18.0	0.45	0.40	0.34											
XBD4.2/5-50VS	6.5	23.4	0.47	0.42	0.36											
XBD4.6/5-50VS	3.5	12.6	0.50	0.46	0.40	7.5	58	2.5	108	680	440	140×200	4-φ18	100×160	105	
XBD4.8/5-50VS	5.0	18.0	0.51	0.48	0.42											
XBD5.0/5-50VS	6.5	23.4	0.54	0.50	0.45											
XBD5.8/5-50VS	3.5	12.6	0.62	0.58	0.53	11	49	2.5	175	750	440	140×200	4-φ18	100×160	105	
XBD6.0/5-50VS	5.0	18.0	0.63	0.60	0.55											
XBD6.2/5-50VS	6.5	23.4	0.66	0.62	0.56											
XBD6.8/5-50VS	3.5	12.6	0.72	0.68	0.63	11	50	2.5	175	750	440	140×200	4-φ18	100×160	105	
XBD7.0/5-50VS	5.0	18.0	0.73	0.70	0.65											
XBD7.2/5-50VS	6.5	23.4	0.75	0.72	0.67											
XBD7.6/5-50VS	3.5	12.6	0.79	0.76	0.71	15	50	2.5	175	785	460	160×220	4-φ18	120×180	120	
XBD7.8/5-50VS	5.0	18.0	0.81	0.78	0.73											
XBD8.0/5-50VS	6.5	23.4	0.83	0.80	0.75											
XBD8.2/5-50VS	3.5	12.6	0.85	0.82	0.77	15	38	2.5	195	785	460	160×220	4-φ18	120×180	120	
XBD8.4/5-50VS	5.0	18.0	0.87	0.84	0.80											
XBD8.6/5-50VS	6.5	23.4	0.89	0.86	0.81											
XBD8.8/5-50VS	3.5	12.6	0.91	0.88	0.83	18.5	40	2.5	215	830	550	160×220	4-φ18	120×180	130	
XBD9.0/5-50VS	5.0	18.0	0.93	0.90	0.85											
XBD9.2/5-50VS	6.5	23.4	0.95	0.92	0.87											
XBD9.8/5-50VS	3.5	12.6	1.02	0.98	0.93	22	40	2.5	245	855	550	160×220	4-φ18	120×180	130	
XBD10.0/5-50VS	5.0	18.0	1.03	1.00	0.95											
XBD10.2/5-50VS	6.5	23.4	1.05	1.02	0.97											
XBD11/5-50VS	3.5	12.6	1.13	1.10	1.05	30	40	2.5	310	920	550	160×220	4-φ18	120×180	130	
XBD12/5-50VS	5.0	18.0	1.26	1.20	1.12											
XBD12.5/5-50VS	6.5	23.4	1.32	1.25	1.16											
XBD3.0/10-65VS	7	25.2	0.34	0.30	0.23	7.5	71	3.0	103	585	380	140×200	4-φ18	100×160	105	
XBD3.2/10-65VS	10	36.0	0.37	0.32	0.25											
XBD3.4/10-65VS	12	43.2	0.38	0.34	0.26											
XBD3.8/10-65VS	7	25.2	0.42	0.38	0.31	7.5	67	3.0	166	625	380	140×200	4-φ18	100×160	105	
XBD4.0/10-65VS	10	36.0	0.45	0.40	0.34											
XBD4.2/10-65VS	12	43.2	0.47	0.42	0.36											

■ XBD**/**-**-**VS 型消防泵技术参数及外形尺寸

The installation dimensions of XBD**/**-**-**VS type fire-fighting pump.

型号 Types	流量(Q)Flux		出口压力 Pd(MPa) Outlet pressure			转速 n(r/min) rotate speed	电机 功率 P(KW) Power	效率 η(%) Power	气蚀 余量 (m) margin for erosion	重量 (kg) total weight	外形尺寸 outline dimensions			安装尺寸 Install the size		
	L/s	m ³ /h	小流量点 small flow click	设计点 Design and click	大流量点 Big flow click						H	L	C ₁ × B ₁	n-φd	C ₂ × B ₂	A
XBD4.6/10-65VS	7	25.2	0.50	0.46	0.40	11	67	3.0	176	685	480	160×220	4-φ18	120×180	120	
XBD4.8/10-65VS	10	36.0	0.51	0.48	0.42											
XBD5.0/10-65VS	12	43.2	0.54	0.50	0.45											
XBD5.8/10-65VS	7	25.2	0.62	0.58	0.53	11	59	3.0	180	755	480	160×220	4-φ18	120×180	120	
XBD6.0/10-65VS	10	36.0	0.63	0.60	0.55											
XBD6.2/10-65VS	12	43.2	0.66	0.62	0.56											
XBD6.8/10-65VS	7	25.2	0.72	0.68	0.63	15	59	3.0	205	755	480	160×220	4-φ18	120×180	120	
XBD7.0/10-65VS	10	36.0	0.73	0.70	0.65											
XBD7.2/10-65VS	12	43.2	0.75	0.72	0.67											
XBD7.6/10-65VS	7	25.2	0.79	0.76	0.71	18.5	59	3.0	235	820	550	160×220	4-φ18	120×180	135	
XBD7.8/10-65VS	10	36.0	0.81	0.78	0.73											
XBD8.0/10-65VS	12	43.2	0.83	0.80	0.75											
XBD8.2/10-65VS	7	25.2	0.85	0.82	0.77	18.5	54	3.0	335	820	550	160×220	4-φ18	120×180	135	
XBD8.4/10-65VS	10	36.0	0.87	0.84	0.80											
XBD8.6/10-65VS	12	43.2	0.89	0.86	0.81											
XBD8.8/10-65VS	7	25.2	0.91	0.88	0.83	22	54	3.0	335	840	550	160×220	4-φ18	120×180	135	
XBD9.0/10-65VS	10	36.0	0.93	0.90	0.85											
XBD9.2/10-65VS	12	43.2	0.95	0.92	0.87											
XBD9.8/10-65VS	7	25.2	1.02	0.98	0.93	22	53	3.0	335	840	550	160×220	4-φ18	120×180	135	
XBD10.0/10-65VS	10	36.0	1.03	1.00	0.95											
XBD10.2/10-65VS	12	43.2	1.05	1.02	0.97											
XBD11/10-65VS	7	25.2	1.13	1.10	1.05	30	54	3.0	350	945	550	160×220	4-φ18	120×180	135	
XBD12/10-65VS	10	36.0	1.26	1.20	1.12											
XBD12.5/10-65VS	12	43.2	1.32	1.25	1.16											
XBD3.0/15-65VS	10.5	37.8	0.34	0.30	0.23	7.5	71	3.0	103	685	400	140×200	4-φ18	100×160	125	
XBD3.2/15-65VS	15.0	54.0	0.37	0.32	0.25											
XBD3.4/15-65VS	18.0	64.8	0.38	0.34	0.26											
XBD3.8/15-65VS	10.5	37.8	0.42	0.38	0.31	11	67	3.0	166	725	450	140×200	4-φ18	100×160	125	
XBD4.0/15-65VS	15.0	54.0	0.45	0.40	0.34											
XBD4.2/15-65VS	18.0	64.8	0.47	0.42	0.36											
XBD4.6/15-65VS	10.5	37.8	0.50	0.46	0.40	15	67	3.0	176	770	450	140×200	4-φ18	100×160	125	
XBD4.8/15-65VS	15.0	54.0	0.51	0.48	0.42											
XBD5.0/15-65VS	18.0	64.8	0.54	0.50	0.45											
XBD5.8/15-65VS	10.5	37.8	0.62	0.58	0.53	18.5	59	3.0	180	825	485	160×220	4-φ18	120×180	135	
XBD6.0/15-65VS	15.0	54.0	0.63	0.60	0.55											
XBD6.2/15-65VS	18.0	64.8	0.66	0.62	0.56											

■ XBD**/**-**-**VS 型消防泵技术参数及外形尺寸

The installation dimensions of XBD**/**-**-**VS type fire-fighting pump.

型号 Types	流量 (Q) Flux		出口压力 Pd(MPa) Outlet pressure			转速 n(r/min) rotate speed	电机 功率 P(KW) Power	效率 η (%) Power	气蚀 余量 (m) margin for erosion	重量 (kg) total weight	外形尺寸 outline dimensions			安装尺寸 Install the size			
	L/s	m³/h	小流量点 small flow click	设计点 Design and click	大流量点 Big flow click						H	L	C ₁ × B ₁	n-φd	C ₂ × B ₂	A	
XBD6.8/15-65VS	10.5	37.8	0.72	0.68	0.63	18.5	59	3.0	180	825	485	160×220	4-φ18	120×180	135		
XBD7.0/15-65VS	15.0	54.0	0.73	0.70	0.65												
XBD7.2/15-65VS	18.0	64.8	0.75	0.72	0.67												
XBD7.6/15-65VS	10.5	37.8	0.79	0.76	0.71	22	59	3.0	205	845	485	160×220	4-φ18	120×180	135		
XBD7.8/15-65VS			15.0	54.0	0.81											0.78	0.73
XBD8.0/15-65VS			18.0	64.8	0.83											0.80	0.75
XBD8.2/15-65VS	10.5	37.8	0.85	0.82	0.77	22	59	3.0	235	845	485	160×220	4-φ18	120×180	135		
XBD8.4/15-65VS			15.0	54.0	0.87											0.84	0.80
XBD8.6/15-65VS			18.0	64.8	0.89											0.86	0.81
XBD8.8/15-65VS	10.5	37.8	0.91	0.88	0.83	30	54	3.0	335	1000	580	190×280	4-φ18	130×220	150		
XBD9.0/15-65VS			15.0	54.0	0.93											0.90	0.85
XBD9.2/15-65VS			18.0	64.8	0.95											0.92	0.87
XBD9.8/15-65VS	10.5	37.8	1.02	0.98	0.93	30	53	3.0	335	1000	580	190×280	4-φ18	130×220	150		
XBD10.0/15-65VS			15.0	54.0	1.03											1.00	0.95
XBD10.2/15-65VS			18.0	64.8	1.05											1.02	0.97
XBD11/15-65VS	10.5	37.8	1.13	1.10	1.05	37	54	3.0	350	1000	580	190×280	4-φ18	130×220	150		
XBD12/15-65VS			15.0	54.0	1.26											1.20	1.12
XBD12.5/15-65VS			18.0	64.8	1.32											1.25	1.16
XBD3.0/10-80VS	7	25.2	0.34	0.30	0.23	7.5	71	3.0	105	650	400	140×200	4-φ18	100×160	125		
XBD3.2/10-80VS			10	36.0	0.37											0.32	0.25
XBD3.4/10-80VS			12	43.2	0.38											0.34	0.26
XBD3.8/10-80VS	7	25.2	0.42	0.38	0.31	11	66	3.0	165	775	430	140×200	4-φ18	100×160	125		
XBD4.0/10-80VS			10	36.0	0.45											0.40	0.34
XBD4.2/10-80VS			12	43.2	0.47											0.42	0.36
XBD4.6/10-80VS	7	25.2	0.50	0.46	0.40	15	67	3.0	175	775	430	140×200	4-φ18	100×160	125		
XBD4.8/10-80VS			10	36.0	0.51											0.48	0.42
XBD5.0/10-80VS			12	43.2	0.54											0.50	0.45
XBD5.8/10-80VS	7	25.2	0.62	0.58	0.53	18.5	58	3.0	185	820	480	160×220	4-φ18	120×180	130		
XBD6.0/10-80VS			10	36.0	0.63											0.60	0.55
XBD6.2/10-80VS			12	43.2	0.66											0.62	0.56
XBD6.8/10-80VS	7	25.2	0.72	0.68	0.63	22	59	3.0	210	840	480	160×220	4-φ18	120×180	130		
XBD7.0/10-80VS			10	36.0	0.73											0.70	0.65
XBD7.2/10-80VS			12	43.2	0.75											0.72	0.67
XBD7.6/10-80VS	7	25.2	0.79	0.76	0.71	22	59	3.0	210	840	480	160×220	4-φ18	120×180	130		
XBD7.8/10-80VS			10	36.0	0.81											0.78	0.73
XBD8.0/10-80VS			12	43.2	0.83											0.80	0.75

■ XBD**/**-**-**VS 型消防泵技术参数及外形尺寸

The installation dimensions of XBD**/**-**-**VS type fire-fighting pump.

型号 Types	流量 (Q) Flux		出口压力 Pd(MPa) Outlet pressure			转速 n(r/min) rotate speed	电机 功率 P(KW) Power	效率 η (%) Power	气蚀 余量 (m) margin for erosion	重量 (kg) total weight	外形尺寸 outline dimensions			安装尺寸 Install the size			
	L/s	m³/h	小流量点 small flow click	设计点 Design and click	大流量点 Big flow click						H	L	C ₁ × B ₁	n-φd	C ₂ × B ₂	A	
XBD8.2/10-80VS	7	25.2	0.85	0.82	0.77	22	59	3.0	210	885	580	190×280	4-φ18	130×220	150		
XBD8.4/10-80VS			10	36.0	0.87											0.84	0.80
XBD8.6/10-80VS			12	43.2	0.89											0.86	0.81
XBD8.8/10-80VS	7	25.2	0.91	0.88	0.83	30	53	3.0	340	1000	580	190×280	4-φ18	130×220	150		
XBD9.0/10-80VS			10	36.0	0.93											0.90	0.85
XBD9.2/10-80VS			12	43.2	0.95											0.92	0.87
XBD9.8/10-80VS	7	25.2	1.02	0.98	0.93	30	54	3.0	340	1000	580	190×280	4-φ18	130×220	150		
XBD10.0/10-80VS			10	36.0	1.03											1.00	0.95
XBD10.2/10-80VS			12	43.2	1.05											1.02	0.97
XBD11/10-80VS	7	25.2	1.13	1.10	1.05	37	54	3.0	355	1000	580	190×280	4-φ18	130×220	150		
XBD12/10-80VS			10	36.0	1.26											1.20	1.12
XBD12.5/10-80VS			12	43.2	1.32											1.25	1.16
XBD3.0/15-80VS	10.5	37.8	0.34	0.30	0.23	7.5	71	3.0	105	650	400	140×200	4-φ18	100×160	125		
XBD3.2/15-80VS			15.0	54.0	0.37											0.32	0.25
XBD3.4/15-80VS			18.0	64.8	0.38											0.34	0.26
XBD3.8/15-80VS	10.5	37.8	0.42	0.38	0.31	11	66	3.0	165	775	430	140×200	4-φ18	100×160	125		
XBD4.0/15-80VS			15.0	54.0	0.45											0.40	0.34
XBD4.2/15-80VS			18.0	64.8	0.47											0.42	0.36
XBD4.6/15-80VS	10.5	37.8	0.50	0.46	0.40	15	67	3.0	175	775	430	140×200	4-φ18	100×160	125		
XBD4.8/15-80VS			15.0	54.0	0.51											0.48	0.42
XBD5.0/15-80VS			18.0	64.8	0.54											0.50	0.45
XBD5.8/15-80VS	10.5	37.8	0.62	0.58	0.53	18.5	58	3.0	185	820	480	160×220	4-φ18	120×180	130		
XBD6.0/15-80VS			15.0	54.0	0.63											0.60	0.55
XBD6.2/15-80VS			18.0	64.8	0.66											0.62	0.56
XBD6.8/15-80VS	10.5	37.8	0.72	0.68	0.63	22	59	3.0	210	840	480	160×220	4-φ18	120×180	130		
XBD7.0/15-80VS			15.0	54.0	0.73											0.70	0.65
XBD7.2/15-80VS			18.0	64.8	0.75											0.72	0.67
XBD7.6/15-80VS	10.5	37.8	0.79	0.76	0.71	22	59	3.0	210	840	480	160×220	4-φ18	120×180	130		
XBD7.8/15-80VS			15.0	54.0	0.81											0.78	0.73
XBD8.0/15-80VS			18.0	64.8	0.83											0.80	0.75
XBD8.2/15-80VS	10.5	37.8	0.85	0.82	0.77	22	59	3.0	210	885	580	190×280	4-φ18	130×220	150		
XBD8.4/15-80VS			15.0	54.0	0.87											0.84	0.80
XBD8.6/15-80VS			18.0	64.8	0.89											0.86	0.81
XBD8.8/15-80VS	10.5	37.8	0.91	0.88	0.83	30	53	3.0	340	1000	580	190×280	4-φ18	130×220	150		
XBD9.0/15-80VS			15.0	54.0	0.93											0.90	0.85
XBD9.2/15-80VS			18.0	64.8	0.95											0.92	0.87

■ XBD**/**-**VS 型消防泵技术参数及外形尺寸

The installation dimensions of XBD**/**-**VS type fire-fighting pump.

型号 Types	流量(Q)Flux		出口压力 Pd(MPa) Outlet pressure			转速 n(r/min) rotate speed	电机 功率 P(KW)	效率 η (%) Power	气蚀 余量 (m) margin for erosion	重量 (kg) total weight	外形尺寸 outline dimensions			安装尺寸 Install the size		
	L/s	m ³ /h	小流量点 small flow click	设计点 Design and click	大流量点 Big flow click						H	L	C ₁ ×B ₁	n-φd	C ₂ ×B ₂	A
XBD9.8/15-80VS	10.5	37.8	1.02	0.98	0.93	2900	30	54	3.0	340	1000	580	190×280	4-φ18	130×220	150
XBD10.0/15-80VS	15.0	54.0	1.03	1.00	0.95											
XBD10.2/15-80VS	18.0	64.8	1.05	1.02	0.97											
XBD11/15-80VS	10.5	37.8	1.13	1.10	1.05	37	54	3.0	355	1000	580	190×280	4-φ18	130×220	150	
XBD12/15-80VS			1.26	1.20	1.12											
XBD12.5/15-80VS			1.32	1.25	1.16											
XBD3.0/20-80VS	14.0	50.4	0.34	0.30	0.23	11	65	3.0	165	775	430	140×200	4-φ18	100×160	125	
XBD3.2/20-80VS	20.0	72.0	0.37	0.32	0.25											
XBD3.4/20-80VS	24.0	86.4	0.38	0.34	0.26											
XBD3.6/20-80VS	14.0	50.4	0.40	0.36	0.29	15	67	3.0	175	775	430	140×200	4-φ18	100×160	125	
XBD3.8/20-80VS			0.42	0.38	0.31											
XBD4.0/20-80VS			0.44	0.40	0.33											
XBD4.2/20-80VS	14.0	50.4	0.46	0.42	0.35	15	69	4.5	175	775	430	140×200	4-φ18	100×160	125	
XBD4.4/20-80VS			0.48	0.44	0.37											
XBD4.6/20-80VS			0.50	0.46	0.39											
XBD4.8/20-80VS	14.0	50.4	0.52	0.48	0.41	18.5	59	4.0	210	820	480	160×220	4-φ18	120×180	130	
XBD5.0/20-80VS	20.0	72.0	0.54	0.50	0.43											
XBD5.2/20-80VS	24.0	86.4	0.56	0.52	0.45											
XBD5.4/20-80VS	14.0	50.4	0.58	0.54	0.47	22	59	4.0	240	840	480	160×220	4-φ18	120×180	130	
XBD5.6/20-80VS			0.60	0.56	0.49											
XBD5.8/20-80VS			0.62	0.58	0.51											
XBD6.0/20-80VS	14.0	50.4	0.64	0.60	0.53	30	66	4.0	315	860	550	190×280	4-φ18	130×220	150	
XBD6.2/20-80VS	20.0	72.0	0.66	0.62	0.55											
XBD6.4/20-80VS	24.0	86.4	0.68	0.64	0.57											
XBD6.6/20-80VS	14.0	50.4	0.70	0.66	0.59	30	68	4.0	315	965	550	190×280	4-φ18	130×220	150	
XBD6.8/20-80VS			0.72	0.68	0.61											
XBD7.0/20-80VS			0.74	0.70	0.63											
XBD7.2/20-80VS	14.0	50.4	0.76	0.72	0.65	30	68	4.0	315	965	550	190×280	4-φ18	130×220	150	
XBD7.4/20-80VS			0.78	0.74	0.67											
XBD7.6/20-80VS			0.80	0.76	0.69											
XBD7.8/20-80VS	14.0	50.4	0.82	0.78	0.71	37	69	4.0	330	965	550	190×280	4-φ18	130×220	150	
XBD8.0/20-80VS			0.84	0.80	0.73											
XBD8.2/20-80VS			0.86	0.82	0.75											
XBD8.4/20-80VS	14.0	50.4	0.88	0.84	0.77	37	69	4.0	330	965	550	190×280	4-φ22	130×220	150	
XBD8.6/20-80VS			0.90	0.86	0.79											
XBD8.8/20-80VS			0.92	0.88	0.81											

■ XBD**/**-**VS 型消防泵技术参数及外形尺寸

The installation dimensions of XBD**/**-**VS type fire-fighting pump.

型号 Types	流量(Q)Flux		出口压力 Pd(MPa) Outlet pressure			转速 n(r/min) rotate speed	电机 功率 P(KW)	效率 η (%) Power	气蚀 余量 (m) margin for erosion	重量 (kg) total weight	外形尺寸 outline dimensions			安装尺寸 Install the size			
	L/s	m ³ /h	小流量点 small flow click	设计点 Design and click	大流量点 Big flow click						H	L	C ₁ ×B ₁	n-φd	C ₂ ×B ₂	A	
XBD9.0/20-80VS	14.0	50.4	0.94	0.90	0.83	2900	45	65	4.0	420	1080	640	210×275	4-φ22	160×220	180	
XBD9.2/20-80VS	20.0	72.0	0.96	0.92	0.85												
XBD9.4/20-80VS	24.0	86.4	0.98	0.94	0.87												
XBD9.6/20-80VS	14.0	50.4	1.00	0.96	0.89	45	65	4.0	420	1080	640	210×275	4-φ22	160×220	180		
XBD9.8/20-80VS			20.0	72.0	1.02											0.98	0.91
XBD10.0/20-80VS			24.0	86.4	1.04											1.00	0.93
XBD3.0/25-80VS	17.5	63.0	0.34	0.30	0.23	15	76	4.5	184	795	505	160×220	4-φ18	120×180	150		
XBD3.2/25-80VS			25.0	90.0	0.37											0.32	0.25
XBD3.4/25-80VS			30.0	108	0.38											0.34	0.26
XBD3.8/25-80VS	17.5	63.0	0.42	0.38	0.31	18.5	74	4.0	220	830	480	160×220	4-φ18	120×180	140		
XBD4.0/25-80VS			25.0	90.0	0.45											0.40	0.34
XBD4.2/25-80VS			30.0	108	0.47											0.42	0.36
XBD4.6/25-80VS	17.5	63.0	0.50	0.46	0.40	22	74	4.0	251	850	480	160×220	4-φ18	120×180	140		
XBD4.8/25-80VS			25.0	90.0	0.51											0.48	0.42
XBD5.0/25-80VS			30.0	108	0.54											0.50	0.45
XBD5.8/25-80VS	17.5	63.0	0.62	0.58	0.53	30	69	4.0	315	860	550	190×280	4-φ18	130×220	150		
XBD6.0/25-80VS			25.0	90.0	0.63											0.60	0.55
XBD6.2/25-80VS			30.0	108	0.66											0.62	0.56
XBD6.8/25-80VS	17.5	63.0	0.72	0.68	0.63	30	69	4.0	315	965	550	190×280	4-φ18	130×220	150		
XBD7.0/25-80VS			25.0	90.0	0.73											0.70	0.65
XBD7.2/25-80VS			30.0	108	0.75											0.72	0.67
XBD7.6/25-80VS	17.5	63.0	0.79	0.76	0.71	37	69	4.0	330	965	550	190×280	4-φ18	130×220	150		
XBD7.8/25-80VS			25.0	90.0	0.81											0.78	0.73
XBD8.0/25-80VS			30.0	108	0.83											0.80	0.75
XBD8.2/25-80VS	17.5	63.0	0.85	0.82	0.77	37	69	4.0	330	965	550	190×280	4-φ18	130×220	150		
XBD8.4/25-80VS			25.0	90.0	0.87											0.84	0.80
XBD8.6/25-80VS			30.0	108	0.89											0.86	0.81
XBD8.8/25-80VS	17.5	63.0	0.91	0.88	0.83	45	65	4.0	420	1080	640	210×275	4-φ22	160×220	180		
XBD9.0/25-80VS			25.0	90.0	0.93											0.90	0.85
XBD9.2/25-80VS			30.0	108	0.95											0.92	0.87
XBD9.8/25-80VS	17.5	63.0	1.02	0.98	0.93	55	66	4.0	535	1165	640	210×275	4-φ22	160×220	180		
XBD10.0/25-80VS			25.0	90.0	1.03											1.00	0.95
XBD10.2/25-80VS			30.0	108	1.05											1.02	0.97
XBD11/25-80VS	17.5	63.0	1.13	1.10	1.05	75	66	4.0	675	1235	640	210×275	4-φ22	160×220	180		
XBD12/25-80VS			25.0	90.0	1.26											1.20	1.12
XBD12.5/25-80VS			30.0	108	1.32											1.25	1.16

■ XBD**/**-**VS 型消防泵技术参数及外形尺寸
The installation dimensions of XBD**/**-**VS type fire-fighting pump.

型号 Types	流量 (Q) Flux		出口压力 Pd(MPa) Outlet pressure			转速 n(r/min) rotate speed	电机 功率 P(KW)	效率 η (%)	气蚀 余量 (m) margin for erosion	重量 (kg) total weight	外形尺寸 outline dimensions			安装尺寸 Install the size		
	L/s	m ³ /h	小流量点 small flow click	设计点 Design and click	大流量点 Big flow click						H	L	C ₁ × B ₁	n-φd	C ₂ × B ₂	A
XBD9.0/20-100VS	14.0	50.4	0.94	0.90	0.83	11	74	4.5	181	795	500	160×220	4-φ22	120×180	160	
XBD9.2/20-100VS	20.0	72.0	0.96	0.92	0.85											
XBD9.4/20-100VS	24.0	86.4	0.98	0.94	0.87											
XBD9.6/20-100VS	14.0	50.4	1.00	0.96	0.89	15	76	4.5	181	795	500	160×220	4-φ22	120×180	160	
XBD9.8/20-100VS	20.0	72.0	1.02	0.98	0.91											
XBD10.0/20-100VS	24.0	86.4	1.04	1.00	0.93											
XBD3.0/20-100VS	14.0	50.4	0.34	0.30	0.23	18.5	73	4.0	215	830	480	160×220	4-φ18	120×180	140	
XBD3.2/20-100VS	20.0	72.0	0.37	0.32	0.25											
XBD3.4/20-100VS	24.0	86.4	0.38	0.34	0.26											
XBD3.6/20-100VS	14.0	50.4	0.40	0.36	0.29	22	74	4.0	245	850	480	160×220	4-φ18	120×180	140	
XBD3.8/20-100VS	20.0	72.0	0.42	0.38	0.31											
XBD4.0/20-100VS	24.0	86.4	0.44	0.40	0.33											
XBD4.2/20-100VS	14.0	50.4	0.46	0.42	0.35	22	60	4.0	330	855	550	160×220	4-φ18	120×180	140	
XBD4.4/20-100VS	20.0	72.0	0.48	0.44	0.37											
XBD4.6/20-100VS	24.0	86.4	0.50	0.46	0.39											
XBD4.8/20-100VS	14.0	50.4	0.52	0.48	0.41	22	66	4.0	330	855	550	160×220	4-φ18	120×180	140	
XBD5.0/20-100VS	20.0	72.0	0.54	0.50	0.43											
XBD5.2/20-100VS	24.0	86.4	0.56	0.52	0.45											
XBD5.4/20-100VS	14.0	50.4	0.58	0.54	0.47	30	68	4.0	330	960	520	160×220	4-φ18	120×180	140	
XBD5.6/20-100VS	20.0	72.0	0.60	0.56	0.49											
XBD5.8/20-100VS	24.0	86.4	0.62	0.58	0.51											
XBD6.0/20-100VS	14.0	50.4	0.64	0.60	0.53	37	69	4.0	345	960	520	160×220	4-φ18	120×180	140	
XBD6.2/20-100VS	20.0	72.0	0.66	0.62	0.55											
XBD6.4/20-100VS	24.0	86.4	0.68	0.64	0.57											
XBD6.6/20-100VS	14.0	50.4	0.70	0.66	0.59	37	69	4.0	345	960	520	160×220	4-φ18	120×180	140	
XBD6.8/20-100VS	20.0	72.0	0.72	0.68	0.61											
XBD7.0/20-100VS	24.0	86.4	0.74	0.70	0.63											
XBD7.2/20-100VS	14.0	50.4	0.76	0.72	0.65	37	63	4.0	385	1040	630	230×315	4-φ22	180×270	160	
XBD7.4/20-100VS	20.0	72.0	0.78	0.74	0.67											
XBD7.6/20-100VS	24.0	86.4	0.80	0.76	0.69											
XBD7.8/20-100VS	14.0	50.4	0.82	0.78	0.71	45	65	4.0	439	1080	630	230×315	4-φ18	180×270	160	
XBD8.0/20-100VS	20.0	72.0	0.84	0.80	0.73											
XBD8.2/20-100VS	24.0	86.4	0.86	0.82	0.75											
XBD8.4/20-100VS	14.0	50.4	0.88	0.84	0.77	45	65	4.0	439	1080	630	230×315	4-φ22	180×270	160	
XBD8.6/20-100VS	20.0	72.0	0.90	0.86	0.79											
XBD8.8/20-100VS	24.0	86.4	0.92	0.88	0.81											

■ XBD**/**-**VS 型消防泵技术参数及外形尺寸
The installation dimensions of XBD**/**-**VS type fire-fighting pump.

型号 Types	流量 (Q) Flux		出口压力 Pd(MPa) Outlet pressure			转速 n(r/min) rotate speed	电机 功率 P(KW)	效率 η (%)	气蚀 余量 (m) margin for erosion	重量 (kg) total weight	外形尺寸 outline dimensions			安装尺寸 Install the size		
	L/s	m ³ /h	小流量点 small flow click	设计点 Design and click	大流量点 Big flow click						H	L	C ₁ × B ₁	n-φd	C ₂ × B ₂	A
XBD3.0/25-100VS	17.5	63.0	0.34	0.30	0.23	15	76	4.5	184	795	500	160×220	4-φ18	120×180	160	
XBD3.2/25-100VS	25.0	90.0	0.37	0.32	0.25											
XBD3.4/25-100VS	30.0	108	0.38	0.34	0.26											
XBD3.8/25-100VS	17.5	63.0	0.42	0.38	0.31	18.5	74	4.0	215	830	480	160×220	4-φ18	120×180	140	
XBD4.0/25-100VS	25.0	90.0	0.45	0.40	0.34											
XBD4.2/25-100VS	30.0	108	0.47	0.42	0.36											
XBD4.6/25-100VS	17.5	63.0	0.50	0.46	0.40	22	74	4.0	251	850	480	160×220	4-φ18	120×180	140	
XBD4.8/25-100VS	25.0	90.0	0.51	0.48	0.42											
XBD5.0/25-100VS	30.0	108	0.54	0.50	0.45											
XBD5.8/25-100VS	17.5	63.0	0.62	0.58	0.53	30	68	4.0	330	855	550	160×220	4-φ18	120×180	140	
XBD6.0/25-100VS	25.0	90.0	0.63	0.60	0.55											
XBD6.2/25-100VS	30.0	108	0.66	0.62	0.56											
XBD6.8/25-100VS	17.5	63.0	0.72	0.68	0.63	30	69	4.0	330	960	550	160×220	4-φ18	120×180	140	
XBD7.0/25-100VS	25.0	90.0	0.73	0.70	0.65											
XBD7.2/25-100VS	30.0	108	0.75	0.72	0.67											
XBD7.6/25-100VS	17.5	63.0	0.79	0.76	0.71	37	69	4.0	345	960	550	160×220	4-φ18	120×180	140	
XBD7.8/25-100VS	25.0	90.0	0.81	0.78	0.73											
XBD8.0/25-100VS	30.0	108	0.83	0.80	0.75											
XBD8.2/25-100VS	17.5	63.0	0.85	0.82	0.77	45	65	4.0	439	960	550	160×220	4-φ18	120×180	140	
XBD8.4/25-100VS	25.0	90.0	0.87	0.84	0.80											
XBD8.6/25-100VS	30.0	108	0.89	0.86	0.81											
XBD8.8/25-100VS	17.5	63.0	0.91	0.88	0.83	45	65	4.0	439	1080	630	230×315	4-φ22	180×270	160	
XBD9.0/25-100VS	25.0	90.0	0.93	0.90	0.85											
XBD9.2/25-100VS	30.0	108	0.95	0.92	0.87											
XBD9.8/25-100VS	17.5	63.0	1.02	0.98	0.93	55	66	4.0	549	1165	630	230×315	4-φ22	180×270	160	
XBD10.0/25-100VS	25.0	90.0	1.03	1.00	0.95											
XBD10.2/25-100VS	30.0	108	1.05	1.02	0.97											
XBD11.0/25-100VS	17.5	63.0	1.13	1.10	1.05	75	66	4.0	675	1235	630	230×315	4-φ22	180×270	160	
XBD12.0/25-100VS	25.0	90.0	1.26	1.20	1.12											
XBD12.5/25-100VS	30.0	108	1.32	1.25	1.16											
XBD3.0/30-100VS	21.0	75.6	0.34	0.30	0.23	15	76	4.5	184	795	500	160×220	4-φ18	120×180	160	
XBD3.2/30-100VS	30.0	108.0	0.37	0.32	0.25											
XBD3.4/30-100VS	36.0	129.6	0.38	0.34	0.26											
XBD3.8/30-100VS	21.0	75.6	0.42	0.38	0.31	18.5	74	4.0	215	830	480	160×220	4-φ18	120×180	140	
XBD4.0/30-100VS	30.0	108.0	0.45	0.40	0.34											
XBD4.2/30-100VS	36.0	129.6	0.47	0.42	0.36											

■ XBD**/**-**VS 型消防泵技术参数及外形尺寸

The installation dimensions of XBD**/**-**VS type fire-fighting pump.

型号 Types	流量(Q)Flux		出口压力 Pd(MPa) Outlet pressure			转速 n(r/min) rotate speed	电机 功率 P(KW) Power	效率 η (%) Power	气蚀 余量 (m) margin for ir.erosion	重量 (kg) total weight	外形尺寸 outline dimensions			安装尺寸 Install the size			
	L/s	m ³ /h	小流量点 small flow click	设计点 Design and click	大流量点 Big flow click						H	L	C ₁ × B ₁	n-φd	C ₂ × B ₂	A	
XBD4.6/30-100VS	21.0	75.6	0.50	0.46	0.40	22	74	4.0	251	850	480	160×220	4-φ18	120×180	140		
XBD4.8/30-100VS	30.0	108.0	0.51	0.48	0.42												
XBD5.0/30-100VS	36.0	129.6	0.54	0.50	0.45												
XBD5.8/30-100VS	21.0	75.6	0.62	0.58	0.53	30	68	4.0	330	855	550	160×220	4-φ18	120×180	140		
XBD6.0/30-100VS			30.0	108.0	0.63											0.60	0.55
XBD6.2/30-100VS			36.0	129.6	0.66											0.62	0.56
XBD6.8/30-100VS	21.0	75.6	0.72	0.68	0.63	30	69	4.0	330	960	550	160×220	4-φ18	120×180	140		
XBD7.0/30-100VS			30.0	108.0	0.73											0.70	0.65
XBD7.2/30-100VS			36.0	129.6	0.75											0.72	0.67
XBD7.6/30-100VS	21.0	75.6	0.79	0.76	0.71	37	69	4.0	345	960	550	160×220	4-φ18	120×180	140		
XBD7.8/30-100VS			30.0	108.0	0.81											0.78	0.73
XBD8.0/30-100VS			36.0	129.6	0.83											0.80	0.75
XBD8.2/30-100VS	21.0	75.6	0.85	0.82	0.77	45	65	4.0	439	960	580	160×220	4-φ18	120×180	140		
XBD8.4/30-100VS			30.0	108.0	0.87											0.84	0.80
XBD8.6/30-100VS			36.0	129.6	0.89											0.86	0.81
XBD8.8/30-100VS	21.0	75.6	0.91	0.88	0.83	45	65	4.0	439	1080	630	230×315	4-φ22	180×270	160		
XBD9.0/30-100VS			30.0	108.0	0.93											0.90	0.85
XBD9.2/30-100VS			36.0	129.6	0.95											0.92	0.87
XBD9.8/30-100VS	21.0	75.6	1.02	0.98	0.93	55	66	4.0	549	1165	630	230×315	4-φ22	180×270	160		
XBD10.0/30-100VS			30.0	108.0	1.03											1.00	0.95
XBD10.2/30-100VS			36.0	129.6	1.05											1.02	0.97
XBD11.0/30-100VS	21.0	75.6	1.13	1.10	1.05	75	66	4.0	675	1235	630	230×315	4-φ22	180×270	160		
XBD12.0/30-100VS			30.0	108.0	1.26											1.20	1.12
XBD12.5/30-100VS			36.0	129.6	1.32											1.25	1.16
XBD13.0/30-100VS	21.0	75.6	1.36	1.30	1.15	90	57	4.0	950	1310	680	230×320	4-φ22	180×270	185		
XBD14.0/30-100VS			30.0	108.0	1.47											1.40	1.24
XBD15.0/30-100VS			36.0	129.6	1.56											1.50	1.37
XBD3.0/40-100VS	28.0	100	0.34	0.30	0.23	22	79	5.6	210	875	515	190×280	4-φ18	130×220	165		
XBD3.2/40-100VS			40.0	144	0.37											0.32	0.25
XBD3.4/40-100VS			48.0	162	0.38											0.34	0.26
XBD3.8/40-100VS	28.0	100	0.42	0.38	0.31	30	79	5.2	402	970	540	160×220	4-φ18	120×180	150		
XBD4.0/40-100VS			40.0	144	0.45											0.40	0.34
XBD4.2/40-100VS			48.0	162	0.47											0.42	0.36
XBD4.6/40-100VS	28.0	100	0.50	0.46	0.40	37	79	5.2	402	970	540	160×220	4-φ18	120×180	150		
XBD4.8/40-100VS			40.0	144	0.51											0.48	0.42
XBD5.0/40-100VS			48.0	162	0.54											0.50	0.45

■ XBD**/**-**VS 型消防泵技术参数及外形尺寸

The installation dimensions of XBD**/**-**VS type fire-fighting pump.

型号 Types	流量(Q)Flux		出口压力 Pd(MPa) Outlet pressure			转速 n(r/min) rotate speed	电机 功率 P(KW) Power	效率 η (%) Power	气蚀 余量 (m) margin for ir.erosion	重量 (kg) total weight	外形尺寸 outline dimensions			安装尺寸 Install the size			
	L/s	m ³ /h	小流量点 small flow click	设计点 Design and click	大流量点 Big flow click						H	L	C ₁ × B ₁	n-φd	C ₂ × B ₂	A	
XBD5.8/40-100VS	28.0	100	0.62	0.58	0.53	37	77	4.8	400	970	540	160×220	4-φ18	120×180	150		
XBD6.0/40-100VS	40.0	144	0.63	0.60	0.55												
XBD6.2/40-100VS	48.0	162	0.66	0.62	0.56												
XBD6.8/40-100VS	28.0	100	0.72	0.68	0.63	45	77	4.8	420	1120	610	190×280	4-φ18	130×220	150		
XBD7.0/40-100VS			40.0	144	0.73											0.70	0.65
XBD7.2/40-100VS			48.0	162	0.75											0.72	0.67
XBD7.6/40-100VS	28.0	100	0.79	0.76	0.71	55	77	4.8	560	1120	610	190×280	4-φ18	130×220	150		
XBD7.8/40-100VS			40.0	144	0.81											0.78	0.73
XBD8.0/40-100VS			48.0	162	0.83											0.80	0.75
XBD3.0/45-100VS	31.5	113	0.34	0.30	0.23	22	79	5.6	210	875	515	190×280	4-φ18	130×220	165		
XBD3.2/45-100VS			45.0	162	0.37											0.32	0.25
XBD3.4/45-100VS			54.0	194	0.38											0.34	0.26
XBD3.8/45-100VS	31.5	113	0.42	0.38	0.31	30	79	5.2	402	970	540	160×220	4-φ18	120×180	150		
XBD4.0/45-100VS			45.0	162	0.45											0.40	0.34
XBD4.2/45-100VS			54.0	194	0.47											0.42	0.36
XBD4.6/45-100VS	31.5	113	0.50	0.46	0.40	37	79	5.2	402	970	540	160×220	4-φ18	120×180	150		
XBD4.8/45-100VS			45.0	162	0.51											0.48	0.42
XBD5.0/45-100VS			54.0	194	0.54											0.50	0.45
XBD5.8/45-100VS	31.5	113	0.62	0.58	0.53	45	77	4.8	400	970	540	160×220	4-φ18	120×180	150		
XBD6.0/45-100VS			45.0	162	0.63											0.60	0.55
XBD6.2/45-100VS			54.0	194	0.66											0.62	0.56
XBD6.8/45-100VS	31.5	113	0.72	0.68	0.63	55	77	4.8	420	1120	610	190×280	4-φ18	130×220	150		
XBD7.0/45-100VS			45.0	162	0.73											0.70	0.65
XBD7.2/45-100VS			54.0	194	0.75											0.72	0.67
XBD7.6/45-100VS	31.5	113	0.79	0.76	0.71	55	77	4.8	560	1120	610	190×280	4-φ18	130×220	150		
XBD7.8/45-100VS			45.0	162	0.81											0.78	0.73
XBD8.0/45-100VS			54.0	194	0.83											0.80	0.75
XBD3.0/40-125VS	28.0	100	0.34	0.30	0.23	22	78	4.0	265	920	520	190×280	4-φ18	130×220	165		
XBD3.2/40-125VS			40.0	144	0.37											0.32	0.25
XBD3.4/40-125VS			48.0	162	0.38											0.34	0.26
XBD3.8/40-125VS	28.0	100	0.42	0.38	0.31	30	77	5.5	380	1040	560	250×300	4-φ22	200×250	160		
XBD4.0/40-125VS			40.0	144	0.45											0.40	0.34
XBD4.2/40-125VS			48.0	162	0.47											0.42	0.36
XBD4.6/40-125VS	28.0	100	0.50	0.46	0.40	37	77	5.5	395	1040	560	250×300	4-φ22	200×250	160		
XBD4.8/40-125VS			40.0	144	0.51											0.48	0.42
XBD5.0/40-125VS			48.0	162	0.54											0.50	0.45

■ XBD**/*-*VS 型消防泵技术参数及外形尺寸

The installation dimensions of XBD**/*-*VS type fire-fighting pump.

型号 Types	流量 (Q) Flux		出口压力 Pd(MPa) Outlet pressure			转速 n(r/min) rotate speed	电机 功率 P(KW) Power	效率 η (%) Power	气蚀 余量 (m) margin for cavitation	重量 (Kg) total weight	外形尺寸 outline dimensions			安装尺寸 Install the size		
	L/s	m³/h	小流量点 small flow click	设计点 Design and click	大流量点 Big flow click						H	L	C₁×B₁	n-φd	C₂×B₂	A
XBD5.8/40-125VS	28.0	100	0.62	0.58	0.53	37	73	5.0	430	1050	600	250×300	4-φ22	200×250	150	
XBD6.0/40-125VS	40.0	144	0.63	0.60	0.55											
XBD6.2/40-125VS	48.0	162	0.66	0.62	0.56											
XBD6.8/40-125VS	28.0	100	0.72	0.68	0.63	45	74	5.0	490	1080	600	250×300	4-φ22	200×250	150	
XBD7.0/40-125VS	40.0	144	0.73	0.70	0.65											
XBD7.2/40-125VS	48.0	162	0.75	0.72	0.67											
XBD7.6/40-125VS	28.0	100	0.79	0.76	0.71	55	75	5.0	580	1180	600	250×300	4-φ22	200×250	150	
XBD7.8/40-125VS	40.0	144	0.81	0.78	0.73											
XBD8.0/40-125VS	48.0	162	0.83	0.80	0.75											
XBD9.8/40-125VS	28.0	100	1.02	0.98	0.93	75	70	5.0	705	1300	680	290×340	4-φ22	230×280	200	
XBD10.0/40-125VS	40.0	144	1.03	1.00	0.95											
XBD10.2/40-125VS	48.0	162	1.05	1.02	0.97											
XBD11.0/40-125VS	28.0	100	1.13	1.10	1.05	90	70	5.0	790	1350	680	290×340	4-φ22	230×280	200	
XBD12.0/40-125VS	40.0	144	1.26	1.20	1.12											
XBD12.5/40-125VS	48.0	162	1.32	1.25	1.16											
XBD3.0/45-125VS	31.5	113	0.34	0.30	0.23	22	78	4.0	265	920	520	190×280	4-φ18	130×220	165	
XBD3.2/45-125VS	45.0	162	0.37	0.32	0.25											
XBD3.4/45-125VS	54.0	194	0.38	0.34	0.26											
XBD3.8/45-125VS	31.5	113	0.42	0.38	0.31	30	77	5.5	380	1040	560	250×300	4-φ22	200×250	160	
XBD4.0/45-125VS	45.0	162	0.45	0.40	0.34											
XBD4.2/45-125VS	54.0	194	0.47	0.42	0.36											
XBD4.6/45-125VS	31.5	113	0.50	0.46	0.40	37	77	5.5	395	1040	560	250×300	4-φ22	200×250	160	
XBD4.8/45-125VS	45.0	162	0.51	0.48	0.42											
XBD5.0/45-125VS	54.0	194	0.54	0.50	0.45											
XBD5.8/45-125VS	31.5	113	0.62	0.58	0.53	45	73	5.0	430	1050	600	250×300	4-φ22	200×250	150	
XBD6.0/45-125VS	45.0	162	0.63	0.60	0.55											
XBD6.2/45-125VS	54.0	194	0.66	0.62	0.56											
XBD6.8/45-125VS	31.5	113	0.72	0.68	0.63	45	74	5.0	490	1080	600	250×300	4-φ22	200×250	150	
XBD7.0/45-125VS	45.0	162	0.73	0.70	0.65											
XBD7.2/45-125VS	54.0	194	0.75	0.72	0.67											
XBD7.6/45-125VS	31.5	113	0.79	0.76	0.71	55	75	5.0	580	1180	600	250×300	4-φ22	200×250	150	
XBD7.8/45-125VS	45.0	162	0.81	0.78	0.73											
XBD8.0/45-125VS	54.0	194	0.83	0.80	0.75											
XBD9.8/45-125VS	31.5	113	1.02	0.98	0.93	75	70	5.0	705	1300	680	290×340	4-φ22	230×280	200	
XBD10.0/45-125VS	45.0	162	1.03	1.00	0.95											
XBD10.2/45-125VS	54.0	194	1.05	1.02	0.97											

■ XBD**/*-*VS 型消防泵技术参数及外形尺寸

The installation dimensions of XBD**/*-*VS type fire-fighting pump.

型号 Types	流量 (Q) Flux		出口压力 Pd(MPa) Outlet pressure			转速 n(r/min) rotate speed	电机 功率 P(KW) Power	效率 η (%) Power	气蚀 余量 (m) margin for cavitation	重量 (Kg) total weight	外形尺寸 outline dimensions			安装尺寸 Install the size		
	L/s	m³/h	小流量点 small flow click	设计点 Design and click	大流量点 Big flow click						H	L	C₁×B₁	n-φd	C₂×B₂	A
XBD11/45-125VS	31.5	113	1.13	1.10	1.05	2900	90	70	5.0	790	1350	680	290×340	4-φ22	230×280	200
XBD12/45-125VS	45.0	162	1.26	1.20	1.12											
XBD12.5/45-125VS	54.0	194	1.32	1.25	1.16											
XBD2.8/50-150VS	35	126	0.34	0.28	0.23	30	78	2.5	410	1075	760	250×300	4-φ22	200×250	200	
XBD3.0/50-150VS	50	180	0.37	0.30	0.25											
XBD3.2/50-150VS	60	216	0.38	0.32	0.26											
XBD3.8/50-150VS	35	126	0.42	0.38	0.31	1450	37	74	3.5	454	1075	800	250×300	4-φ22	200×250	210
XBD4.0/50-150VS	50	180	0.45	0.40	0.34											
XBD4.2/50-150VS	60	216	0.47	0.42	0.36											
XBD4.6/50-150VS	35	126	0.50	0.46	0.40	45	75	3.5	490	1100	800	250×300	4-φ22	200×250	210	
XBD4.8/50-150VS	50	180	0.51	0.48	0.42											
XBD5.0/50-150VS	60	216	0.54	0.50	0.45											
XBD5.8/50-150VS	35	126	0.62	0.58	0.53	45	74	4.5	460	1115	700	250×300	4-φ22	200×250	200	
XBD6.0/50-150VS	50	180	0.63	0.60	0.55											
XBD6.2/50-150VS	60	216	0.66	0.62	0.56											
XBD6.8/50-150VS	35	126	0.72	0.68	0.63	55	76	4.5	561	1200	700	250×300	4-φ22	200×250	200	
XBD7.0/50-150VS	50	180	0.73	0.70	0.65											
XBD7.2/50-150VS	60	216	0.75	0.72	0.67											
XBD7.6/50-150VS	35	126	0.79	0.76	0.71	75	76	4.5	702	1280	700	250×300	4-φ22	200×250	200	
XBD7.8/50-150VS	50	180	0.81	0.78	0.73											
XBD8.0/50-150VS	60	216	0.83	0.80	0.75											
XBD8.2/50-150VS	35	126	0.85	0.82	0.77	2900	75	73	4.5	724	1210	760	250×300	4-φ22	200×250	200
XBD8.4/50-150VS	50	180	0.87	0.84	0.80											
XBD8.6/50-150VS	60	216	0.89	0.86	0.81											
XBD8.8/50-150VS	35	126	0.91	0.88	0.83	75	73	4.5	724	1210	760	250×300	4-φ22	200×250	200	
XBD9.0/50-150VS	50	180	0.93	0.90	0.85											
XBD9.2/50-150VS	60	216	0.95	0.92	0.87											
XBD9.8/50-150VS	35	126	1.02	0.98	0.93	90	72	4.5	800	1330	760	250×300	4-φ22	200×250	200	
XBD10.0/50-150VS	50	180	1.03	1.00	0.95											
XBD10.2/50-150VS	60	216	1.05	1.02	0.97											
XBD11.0/50-150VS	35	126	1.13	1.10	1.05	110	73	4.5	980	1560	760	250×300	4-φ22	200×250	200	
XBD12.0/50-150VS	50	180	1.26	1.20	1.12											
XBD12.5/50-150VS	60	216	1.32	1.25	1.16											
XBD2.8/55-150VS	38.5	128	0.34	0.28	0.23	1450	30	78	2.5	410	1075	760	250×300	4-φ22	200×250	200
XBD3.0/55-150VS	55.0	198	0.37	0.30	0.25											
XBD3.2/55-150VS	66.0	237	0.38	0.32	0.26											

■ XBD**/**-**VS 型消防泵技术参数及外形尺寸

The installation dimensions of XBD**/**-**VS type fire-fighting pump.

型号 Types	流量(Q)Flux		出口压力 Pd(MPa) Outlet pressure			转速 n(r/min) rotate speed	电机 功率 P(KW) Power	效率 η (%) Power	气蚀 余量 (m) margin for air erosion	重量 (Kg) total weight	外形尺寸 outline dimensions			安装尺寸 Install the size		
	L/s	m ³ /h	小流量点 small flow click	设计点 Design and click	大流量点 Big flow click						H	L	C ₁ ×B ₁	n-φd	C ₂ ×B ₂	A
XBD3.8/55-150VS	38.5	128	0.42	0.38	0.31	1450	37	74	3.5	454	1075	800	250×300	4-φ22	200×250	210
XBD4.0/55-150VS	55.0	198	0.45	0.40	0.34											
XBD4.2/55-150VS	66.0	237	0.47	0.42	0.36											
XBD4.6/55-150VS	38.5	128	0.50	0.46	0.40	1450	45	75	3.5	490	1100	800	250×300	4-φ22	200×250	210
XBD4.8/55-150VS	55.0	198	0.51	0.48	0.42											
XBD5.0/55-150VS	66.0	237	0.54	0.50	0.45											
XBD5.8/55-150VS	38.5	128	0.62	0.58	0.53	1450	55	74	4.5	460	1115	700	250×300	4-φ22	200×250	200
XBD6.0/55-150VS	55.0	198	0.63	0.60	0.55											
XBD6.2/55-150VS	66.0	237	0.66	0.62	0.56											
XBD6.8/55-150VS	38.5	128	0.72	0.68	0.63	1450	55	76	4.5	561	1200	700	250×300	4-φ22	200×250	200
XBD7.0/55-150VS	55.0	198	0.73	0.70	0.65											
XBD7.2/55-150VS	66.0	237	0.75	0.72	0.67											
XBD7.6/55-150VS	38.5	128	0.79	0.76	0.71	1450	75	76	4.5	702	1280	700	250×300	4-φ22	200×250	200
XBD7.8/55-150VS	55.0	198	0.81	0.78	0.73											
XBD8.0/55-150VS	66.0	237	0.83	0.80	0.75											
XBD8.2/55-150VS	38.5	128	0.85	0.82	0.77	2900	75	73	4.5	724	1210	760	250×300	4-φ22	200×250	200
XBD8.4/55-150VS	55.0	198	0.87	0.84	0.80											
XBD8.6/55-150VS	66.0	237	0.89	0.86	0.81											
XBD8.8/55-150VS	38.5	128	0.91	0.88	0.83	2900	75	73	4.5	724	1210	760	250×300	4-φ22	200×250	200
XBD9.0/55-150VS	55.0	198	0.93	0.90	0.85											
XBD9.2/55-150VS	66.0	237	0.95	0.92	0.87											
XBD9.8/55-150VS	38.5	128	1.02	0.98	0.93	2900	90	72	4.5	800	1330	760	250×300	4-φ22	200×250	200
XBD10.0/55-150VS	55.0	198	1.03	1.00	0.95											
XBD10.2/55-150VS	66.0	237	1.05	1.02	0.97											
XBD11.0/55-150VS	38.5	128	1.13	1.10	1.05	2900	110	73	4.5	980	1560	760	250×300	4-φ22	200×250	200
XBD12.0/55-150VS	55.0	198	1.26	1.20	1.12											
XBD12.5/55-150VS	66.0	237	1.32	1.25	1.16											
XBD2.8/55-200VS	38.5	128	0.31	0.28	0.20	1450	30	78	2.5	417	1075	800	280×325	4-φ22	220×270	200
XBD3.0/55-200VS	55.0	198	0.34	0.30	0.23											
XBD3.2/55-200VS	66.0	237	0.37	0.32	0.25											
XBD3.8/55-200VS	38.5	128	0.42	0.38	0.31	1450	37	74	3.5	462	1080	870	300×370	4-φ22	250×320	230
XBD4.0/55-200VS	55.0	198	0.45	0.40	0.34											
XBD4.2/55-200VS	66.0	237	0.47	0.42	0.36											
XBD4.6/55-200VS	38.5	128	0.50	0.46	0.40	1450	45	75	3.5	498	1105	870	300×370	4-φ22	250×320	230
XBD4.8/55-200VS	55.0	198	0.51	0.48	0.42											
XBD5.0/55-200VS	66.0	237	0.54	0.50	0.45											

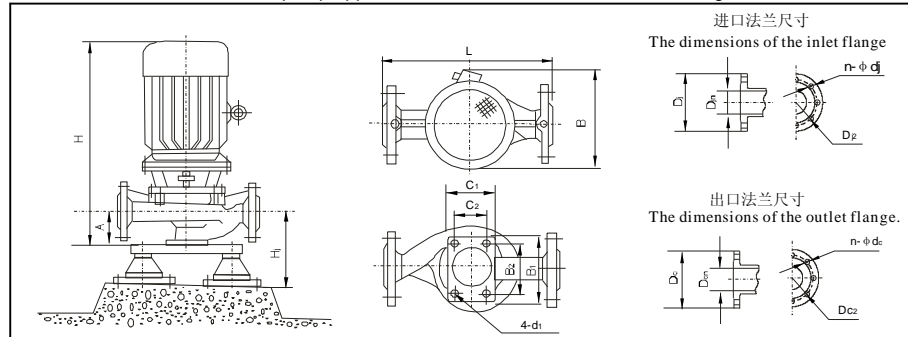
■ XBD**/**-**VS 型消防泵技术参数及外形尺寸

The installation dimensions of XBD**/**-**VS type fire-fighting pump.

型号 Types	流量(Q)Flux		出口压力 Pd(MPa) Outlet pressure			转速 n(r/min) rotate speed	电机 功率 P(KW) Power	效率 η (%) Power	气蚀 余量 (m) margin for air erosion	重量 (Kg) total weight	外形尺寸 outline dimensions			安装尺寸 Install the size			
	L/s	m ³ /h	小流量点 small flow click	设计点 Design and click	大流量点 Big flow click						H	L	C ₁ ×B ₁	n-φd	C ₂ ×B ₂	A	
XBD2.8/100-200VS	70	252	0.31	0.28	0.20	1450	55	80	4.0	675	1195	860	300×370	4-φ22	250×320	225	
XBD3.0/100-200VS	100	360	0.34	0.30	0.23												
XBD3.2/100-200VS	120	432	0.37	0.32	0.25												
XBD4.6/100-200VS	70	252	0.50	0.46	0.40	1450	75	81	4.0	830	1340	880	300×370	4-φ22	250×320	250	
XBD4.8/100-200VS	100	360	0.51	0.48	0.42												
XBD5.0/100-200VS	120	432	0.54	0.50	0.45												
XBD2.8/150-250VS	105	378	0.31	0.28	0.20	1450	75	80	5.5	890	1350	1110	350×400	4-φ26	280×340	265	
XBD3.0/150-250VS	150	540	0.34	0.30	0.23												
XBD3.2/150-250VS	180	648	0.37	0.32	0.25												
XBD4.8/140-250VS	98	352	0.52	0.48	0.42	1450	110	72	4.5	1530	1740	1200	400×500	4-φ26	330×420	310	
XBD5.0/140-250VS	140	504	0.55	0.50	0.44												
XBD5.2/140-250VS	168	604	0.57	0.52	0.46												
XBD2.4/200-300VS	140	504	0.27	0.24	0.19	1450	75	72	5.0	1230	1740	1350	400×500	4-φ26	330×420	360	
XBD2.6/200-300VS	200	720	0.30	0.26	0.20												
XBD2.8/200-300VS	240	864	0.32	0.28	0.22												
XBD2.8/200-300VS	140	504	0.31	0.28	0.20	1450	90	78	5.0	1700	1850	1370	480×550	4-φ26	400×450	390	
XBD3.0/200-300VS	200	720	0.34	0.30	0.23												
XBD3.2/200-300VS	240	864	0.37	0.32	0.25												
XBD4.0/200-300VS	140	504	0.45	0.40	0.34	1450	132	84	5.0	1900	1850	1370	480×550	4-φ26	400×450	390	
XBD4.2/200-300VS	200	720	0.46	0.42	0.36												
XBD4.4/200-300VS	240	864	0.48	0.44	0.39												
XBD2.8/200-350VS	140	504	0.31	0.28	0.20	1450	90	78	5.0	1650	1400	1300	480×550	4-φ26	400×450	360	
XBD3.0/200-350VS	200	720	0.34	0.30	0.23												
XBD3.2/200-350VS	240	864	0.37	0.32	0.25												
XBD3.8/200-350VS	140	504	0.42	0.38	0.32	1450	132	82	4.5	1950	1820	1300	480×550	4-φ26	400×450	360	
XBD4.0/200-350VS	200	720	0.45	0.40	0.34												
XBD4.2/200-350VS	240	864	0.46	0.42	0.36												
XBD4.6/200-350VS	140	504	0.50	0.46	0.40	1450	160	82	4.5	1950	1820	1300	480×550	4-φ26	400×450	360	
XBD4.8/200-350VS	200	720	0.52	0.48	0.42												
XBD5.0/200-350VS	240	864	0.55	0.50	0.44												
XBD3.0/300-400VS	236	850	0.33	0.30	0.24	1450	980	132	76	6.0	1880	1750	1350	480×550	4-φ26	400×450	380
XBD3.2/300-400VS	300	1080	0.34	0.32	0.27												
XBD3.4/300-400VS	344	1300	0.37	0.34	0.31												
XBD2.8/400-500VS	320	1150	0.26	0.24	0.20	1450	980	160	78	6.0	2070	1960	1450	480×550	4-φ26	400×450	720
XBD3.0/400-500VS	400	1440	0.28	0.26	0.23												
XBD3.2/400-500VS	497	1790	0.30	0.28	0.26												

■ XBD**/**-**-**VS型消防泵外形及安装图

XBD **/**-**-**The fire control pump appearance of Model VS and installation diagram

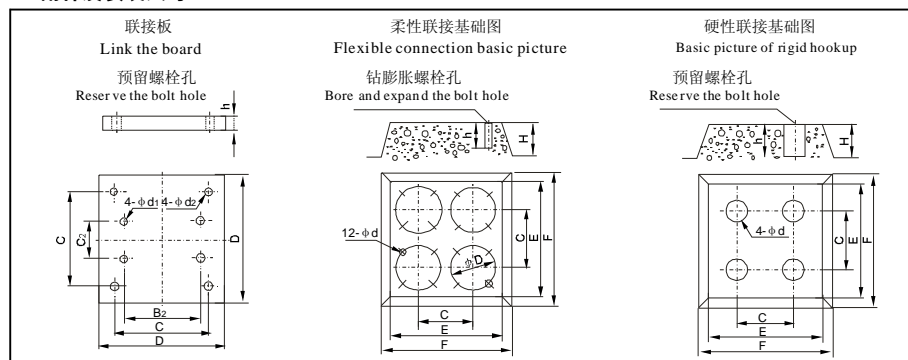


■ XBD**/**-**-**VS型消防泵进出口法兰尺寸

XBD **/**-**-**Fire control pump imports and exports flange measurement of the Model VS

型号 Types	进口法兰 (j) Import the flange				出口法兰 (c) Export Flange			
	D _{j1}	D _{j2}	n-φd ₁	D _{c1}	D _{c2}	D _{c3}	n-φd ₂	
XBD**/**-50VS	φ50	φ165	φ125	4-φ18	φ50	φ165	φ125	4-φ18
XBD**/**-65VS	φ65	φ185	φ145	4-φ18	φ65	φ185	φ145	4-φ18
XBD**/**-80VS	φ80	φ200	φ160	8-φ18	φ80	φ200	φ160	8-φ18
XBD**/**-100VS	φ100	φ220	φ180	8-φ18	φ100	φ220	φ180	8-φ18
XBD**/**-125VS	φ125	φ250	φ210	8-φ18	φ125	φ250	φ210	8-φ18
XBD**/**-150VS	φ150	φ285	φ240	8-φ22	φ150	φ285	φ240	8-φ22
XBD**/**-200VS	φ200	φ340	φ295	12-φ22	φ200	φ340	φ295	12-φ22
XBD**/**-250VS	φ250	φ405	φ355	12-φ26	φ250	φ405	φ355	12-φ26
XBD**/**-300VS	φ300	φ460	φ410	12-φ26	φ300	φ460	φ410	12-φ26
XBD**/**-350VS	φ350	φ520	φ470	16-φ26	φ350	φ520	φ470	16-φ26
XBD**/**-400VS	φ400	φ580	φ525	16-φ29	φ400	φ580	φ525	16-φ29
XBD**/**-500VS	φ500	φ715	φ650	20-φ32	φ500	φ715	φ650	20-φ32

■ 附件及安装尺寸 The enclosure and size of installation

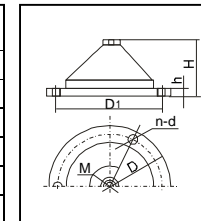


序号 Serial number	联接尺寸 The connecting-plate's dimensions.						柔性联接基础尺寸 Flexibility links the basic size				硬性联接基础尺寸 Basic size of rigid hookup									
	C ₂ ×B ₂	C×C	D×D	h	φd ₁	φd ₂	H	E	F	C	φD	φd	h	H	E	F	C	φd	h	
1	45×70	240×240	300×300	55	φ14	φ14	200	450	500	240	/	/	/	200	450	500	240	60	200	
2	50×80	240×240	300×300	55	φ14	φ14	200	450	500	240	/	/	/	200	450	500	240	60	200	
3	60×100	240×240	300×300	55	φ14	φ14	200	450	500	240	/	/	/	200	450	500	240	60	200	
4	70×120	240×240	300×300	55	φ18	φ16	200	450	500	240	/	/	/	200	450	500	240	60	200	
5	80×130	240×240	300×300	55	φ18	φ16	200	450	500	240	/	/	/	200	450	500	240	60	200	
6	100×160	340×340	400×400	55	φ18	φ16	250	650	700	340	/	/	/	250	650	700	340	80	250	
7	120×180	340×340	400×400	55	φ18	φ16	250	650	700	340	/	/	/	250	650	700	340	80	250	
8	160×220	340×340	400×400	55	φ22	φ16	250	650	700	340	同 隔 振 器 D1	/	/	250	650	700	340	80	250	
9	150×240	340×340	400×400	55	φ22	φ16	250	650	700	340		/	/	/	250	650	700	340	80	250
10	210×260	440×440	500×500	55	φ22	φ16或φ18	300	750	800	440		/	/	/	300	750	800	440	80	250
11	230×280	440×440	500×500	55	φ22	φ16或φ18	300	750	800	440		/	/	/	300	750	800	440	80	250
12	250×320	540×540	600×600	55	φ22	φ16或φ18	300	800	850	500		/	/	/	300	800	850	540	80	250
13	300×350	740×740	880×880	55	φ22	φ20或φ18	350	1000	1100	740		/	/	/	350	1000	1100	740	80	250
14	300×400	740×740	800×800	55	φ22	φ20或φ18	350	1000	1100	740		/	/	/	350	1000	1100	740	80	250
15	350×450	740×740	800×800	55	φ26	φ20或φ18	350	1000	1100	740		/	/	/	350	1000	1100	740	80	250
16	400×500	740×740	800×800	55	φ26	φ20或φ18	350	1000	1100	740		/	/	/	350	1000	1100	740	80	250

JGD型隔振器安装尺寸

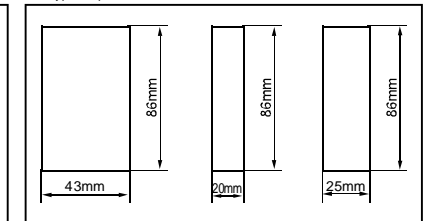
JGD type separates the shaking device and installs the size

型号 Types	M	D	D ₁	H	d	n
JGD2-3	8	180	150	47	12	3
JGD3-2	12	230	200	64	12	3
JGD3-3	12	230	200	64	12	3
JGD4-1	16	280	250	76	12	3
JGD4-2	16	280	250	76	12	3
JGD5-3	20	330	300	104	12	3



SD型隔振垫0.5基本块尺寸

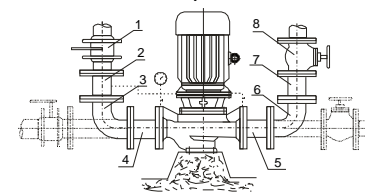
SD type separates and shakes cushion 0.5 A size that 5 is basic



■ 安装方式 Install the way

一、硬性联接 Rigid hookup

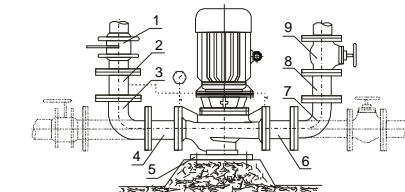
1、直接安装 Install directly



- 1.进口阀门 2.直管 3.弯管 4.直管
5.直管 6.弯管 7.直管 8.出口阀门

1. Import valve 2. In charge of 3 directly. Return bend
4. In charge of 5 directly. In charge of 6 directly. Return bend
7. In charge of 8 directly. Export the valve

2、联接板安装 Link the board to install



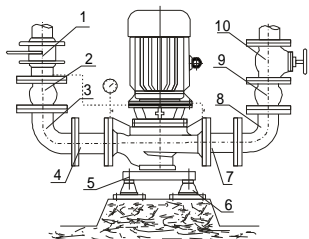
- 1.进口阀门 2.直管 3.弯管 4.直管
5.联接板 6.直管 7.弯管 8.直管 9.出口阀门

1. Import valve 2. In charge of 3 directly. Return bend
4. In charge of 5 directly. Link board 6. In charge of 7 directly. Return bend 8. In charge of 9 directly. Export the valve

二、柔性联接 Flexibility linking

1、联接板，加隔振器安装

Link the board, add and separate the shaking device to install

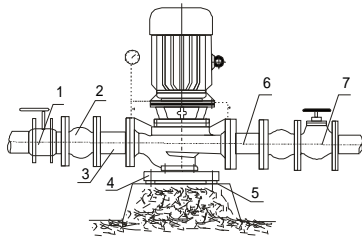


1.进口阀门 2.挠性接头 3.弯管 4.直管 5.联接板
6.隔振器 7.直管 8.弯管 9.挠性接头 10.出口阀门

1.Import valve 2.Connect 3.In flexibility. Return bend 4.In charge of
5.Directly . Link board 6. Separate 7.Shaking devices . In charge of
8.Directly . Return bend 9.Connect 10.In flexibility. Export the valve

2、联接板，加隔振垫安装

Link the board, add and install through shaking the cushion



1.进口阀门 2.挠性接头 3.直管
4.联接板 5.隔振垫 6.直管 7.出口阀门

1.Import valve 2.Connect 3.In flexibility. In charge of
4.Directly . Link board 5. Separate and shake cushion
6. In charge of 7.Directly . Export the valve

设备的维护 Maintenance of the equipment

- 1、进口管道必须充满液体，禁止在气蚀状态下长期运行；
- 2、定时检查电机电流值，不得超过电机的额定电流；
- 3、泵进行长期运行后，由于机械磨损，使机组噪音及振动增大时，应停车检查，必要时可更换易损件及轴承，机组大修一般为一年。
- 4、机械密封润滑应清洁无固体颗粒；
- 5、严禁机械密封在干磨情况下工作；
- 6、启动前应先盘动电机（泵）几圈，以免突然启动造成密封环断裂或损坏。

- 1、Imported pipeline must be full of liquid, forbid running for a long time under the state of cavitating;
- 2、Check the flowing value of electric electromechanics regularly, can't exceed the specified electric current of the electrical machinery;
- 3、After the pump runs for a long time, because machinery is worn and torn, while making aircrew's noise and vibration increase, should park and check, can change quick-wear parts and bearing in case of necessity, it is generally one year since the aircrew overhauled.
- 4、Machinery is sealed and lubricated should be too clean to have solid particle;
- 5、Forbid machinery to seal working in do and rub cases;
- 6、Should record move electrical machinery (pump) several circle first before starting, is it lead to the fact the sealed ring to rupture or damage to start suddenly.

故障原因及排除方法 Trouble reason and method of getting rid of

故障现象 Trouble phenomenon	可能产生的原因 Reason that may be produced	排除方法 Trouble reason and method of getting rid of
1、水泵不出水 1. The water pump does not surface	<p>a. 进出口阀门未打开，进出管路阻塞，叶轮流道阻塞。 b. 电机运转方向不对，电机缺相，转速很慢。 c. 吸入管漏气。 d. 泵内未灌满液体，泵腔内有空气，吸入管路局部高点处存气。 e. 进口供水不足，吸程过高，底阀漏水。 f. 管路阻力过大，泵选型不当。</p> <p>a. The imported and exported valve has not been opened, has passed in and out the pipeline to block, an impeller flows One is blocked. b. The electrical machinery operates in the direction wrong, the electrical machinery lacks the looks, the rotational speed is very slow. c. Suck and is in charge of leaking gas. d. Not filling with the liquid in the pump, there is air in the pump, suck the pipeline It is angry that some culmination place exists. e. Is it supply water insufficient to import, suck Cheng too high, valve leaks at the bottom. f. Pipeline obstruction is too big, the selecting type of the pump is improper.</p>	<p>a. 打开阀门，去除阻塞物。 b. 调整电机转向，紧固电机接线。 c. 拧紧各密封面螺母，排除空气。 d. 打开排气阀，排尽空气。在局部高点处打放气孔。 e. 停机检查、调整。 f. 减少管路弯道，加大管径，重新选泵。</p> <p>a. Open the valve, get rid of and block things. b. Adjust the electrical machinery to turn to, fasten the electrical machinery to wire. c. Tighten and each seal the surface nut, get rid of the air. d. Open the air bleeding valve, arrange and try the air best. Make the air-bleed hole in some culmination place. e. Shut down and check, change. f. Reduce the curved way of pipeline, streng then the pipe diameter, again Select the pump.</p>
2、水泵流量不足 2. The water pump is insufficient in flow	<p>a. 先按1.原因检查。 b. 管道、泵叶轮流道部分阻塞，水垢沉积、阀门开度不足。 c. 电压偏低。 d. 叶轮磨损，流量、扬程、效率下降。</p> <p>a. Press 1 first . The reason is checked. b. Pipeline , pump impeller flow dish block partly , scale deposit , valve It is insufficient to open degree. c. The voltage is on the low side. d. The impeller is worn and torn, the flow , lift , efficiency drop.</p>	<p>a. 先按1.排除。 b. 去除阻塞物，重新调整阀门开度。 c. 稳压。 d. 更换叶轮。</p> <p>a. Press 1 first . Get rid of. b. Get rid of and block things, revitalize the valve to open degree. c. Steady voltage. d. Change the impeller .</p>
3、杂音振动 3. Noise vibration	<p>a. 管路支撑不稳，基础松动。 b. 液体中混有气体。 c. 产生汽蚀，流量过大。 d. 轴承损坏。 e. 电机超载发热运行。</p> <p>a. The pipeline is supported unstably, the foundation becomes flexible. b. Mixed with the gas in the liquid. c. Produce the vapour and lose, the flow is too big. d. The bearing is damaged . e. The electrical machinery overloads and generates heat to run .</p>	<p>a. 稳固管路，加固基础。 b. 排气。 c. 增加进口压力，减小流量。 d. 更换轴承。 e. 调整按4。</p> <p>a. Stabilize the pipeline, strengthen the foundation. b. Exhaust. c. Increase the inlet pressure, reduce the flow . d. Change the bearing. e. Change and press 4.</p>
4、电机发热 4. The electrical machinery generates heat	<p>a. 流量过大、压力表指示扬程偏低，超载运行。 b. 碰擦。 c. 电机轴承损坏。 d. 电压不足。</p> <p>a. The flow is too big, the manometer points out the lift is on the low side, overload and run . b. Touch and wipe. c. The bearing of the electrical machinery is damaged . d. The voltage is insufficient.</p>	<p>a. 关小出口阀或切割叶轮外径。 b. 检查排除。 c. 更换轴承。 d. 稳压。</p> <p>a. Turn off small and export the valve or cut the external diameter of the impeller . b. Check and get rid of . c. Change the bearing. d. Steady voltage.</p>
5、水泵漏水 5. The water pump leaks	<p>a. 机械密封磨损，橡胶件老化损坏。 b. 泵体有砂孔或破裂。 c. 密封面、O型圈、密封垫是否错位、破损、紧固螺栓松动。</p> <p>a. Machinery is sealed and worn and torn, the rubber one wears out and damages . b. The pump body has sand and hole or breaks . c. Seal surface, O type enclosing, sealed cushion misplacing, damage , fastening the bolt to become flexible.</p>	<p>a. 修整，更换。 b. 焊补或更换。 c. 修整密封件，拧紧螺栓。</p> <p>a. Repair, change. b. Weld and mend or change . c. Repair the seal, tighten the bolt.</p>

■ 管路损耗参考表 Reference Table of Pipeline Loss

管径 (mm) Pipe diameter	流量 (l/s) Flow									
	1	2	4	6	8	10	15	20	25	30
25	3.27	13								
40	3.5	14	55							
50	0.8	3.1	13	29						
65		0.8	3.2	7.1	13	20				
75		0.4	1.6	3.3	5.9	9.6	21.6			
100			0.4	0.8	1.3	2.1	6.8	8.6	13	19.4
125				0.23	0.4	0.63	1.3	2.7	4.1	5.9
150					0.16	0.26	0.58	1.1	1.6	2.3
175						0.11	0.27	0.5	0.74	1.05
200						0.13	0.26	0.37	0.53	0.83
250							0.07	0.12	0.18	0.30
300								0.07	0.12	0.18

直管磨蚀损失简表 (供估计用)
管100mm直管损失系数以
新铸铁管为标准, 旧管加倍
Brief table of straight pipe abrasion losses (for estimation only)
loss (meter) of 100m-straight-pipe is worked out on the basis of
new cast iron pipes, and loss of used pipe should be doubled.

■ 阀及弯管折合直管长度 (每个)

Length of Valve and pipe bend converted into straight pipe (per piece)

种类 Type	折合直管直径倍数 Converted into straight pipe diameter (times)	备注 Remarks
全开闸阀 full open gate valve	12	本表加倍 Doubled if not full open
标准弯管 stand pipe bend	25	
逆止阀 backpressure valve	100	
底阀 foot valve	100	部分堵塞加倍 Doubled if partly blocked

注: 例如100mm直径管, 底阀折100倍直径等于100×100=10000mm=10m
直径长度, 假设流量为8l/s, 查上表, 直管每100m损失0.13m, 则100m损失0.13m。
即一个100底阀, 流量为8l/s时, 则损失长度0.13m。

Note: for a 100mm straight pipe, foot valve converted 100 times into
diameter, that is 100×100=10000mm=10m (diameter). Suppose flow
is 8l/s, after referring to the above table, you will find that for straight,
each 100m loses 1.3m, of each 10m losses 0.13m, therefore, for a 100-
foot-valve with flow of 8l/s, its lift loss is 0.13m.

■ 定管路直径之最大流量限制

Maximum flow for certain pipeline diameter

管径直径 (mm) Pipeline diameter	最大流量 (l/s) maximum flow	最大流速 (m/s) maximum flow velocity	管径直径 (mm) Pipeline diameter	最大流量 (l/s) maximum flow	最大流速 (m/s) maximum flow velocity
25	1	2.04	125	30.0	2.44
40	2.5	1.69	150	43.0	2.45
50	4.17	2.12	175	60.0	2.49
65	6.67	2.01	200	83.3	2.69
75	10.0	2.26	300	133.0	2.72
100	18.4	2.33	350	192.0	2.71

超过此限, 使管路损失显著增加。

The pipeline loss will increase if it exceeds the max flow limit.

■ 客户反馈表

您的反馈对我们来说是非常重要的, 填写我们的客户反馈表, 回答我们的一些问题, 提出您的一些建议和意见, 我们将会认真对待您的反馈, 从而改善我们的产品质量和服务水准。

此表中的信息只用来和您保持联系, 不做任何其他用途。

您可以通过拨打 (0086) -021-57432272 联络, 提供您的反馈信息并接受我们的技术支持。

公司		
联系电话		
联系传真		
联系地址		
购买我公司的 产品型号	型 号	
	型 号	
	型 号	
	型 号	
问题/意见/建议		
可供分析的技术参数		
您对公司各项服务的意见, 包括电话支持		